



# NEWSLETTER

## FLT

### April 2025

#### Councils

During this fourth school term, your parent representatives attended the board of directors meeting:

- **Board of Directors Meeting** on March 21

Feel free to read the minutes on our [website!](#)

If you have any questions you would like us to raise at upcoming meetings, you can send them to us now using the [form](#).

#### Other activities

- [Flea market on April 19](#)
- [Eco-team activities](#)

#### Upcoming event

- [School Festival on May 24](#)

Like every year, the FLT are organizing a big raffle, with over **800 prizes to be won!**

#### School supplies

- Online ordering of **school supplies** with the **company LDE** (order deadline May 24, 2025).
- Online ordering of **books/novels, textbooks, and workbooks** in June (once the lists are provided by the high school) via **Maison Petit Renard**.

#### Contact Info



[association@familles-lycee-tokyo.com](mailto:association@familles-lycee-tokyo.com)



<https://www.familles-lycee-tokyo.com/fr/>



# Keeping you informed!



## Board of Directors Meeting on March 21

Several key decisions have been made to support the evolution of governance, services, and the school environment:

- **The new statutes of the Foundation**, along with their implementing regulations, have been approved, in accordance with the adjustments requested by the TMG (Tokyo Metropolitan Government), as part of the reorganization of the Council of Advisors.
- **The 2025-2026 budget** has been adopted, notably including planned investments to improve school infrastructure.
- **The sponsorship search plan**, initiated in 2024, will continue with renewed momentum, with a dedicated person charged with developing partnerships and mobilizing funding for targeted projects.
- **A pilot program for school psychological support** has been approved, with the hosting of a final-year master's student in psychology. Supervised by a professional, she will assess students' needs and contribute to discussions on the possible creation of a full-time school psychologist position.
- **The selection of service providers for the cafeteria** and maintenance has been finalized, following the tenders for the renewal of these contracts.

## How to stay informed?

- By reading our summaries of meeting minutes on our website
- <https://www.familles-lycee-tokyo.com/fr/>



Want updates about the association and school life?

- By following our [Instagram](#) or [Facebook page](#)
- By joining the parent chat groups on
- [WhatsApp](#) (secondary school) or [Line](#) (primary school)

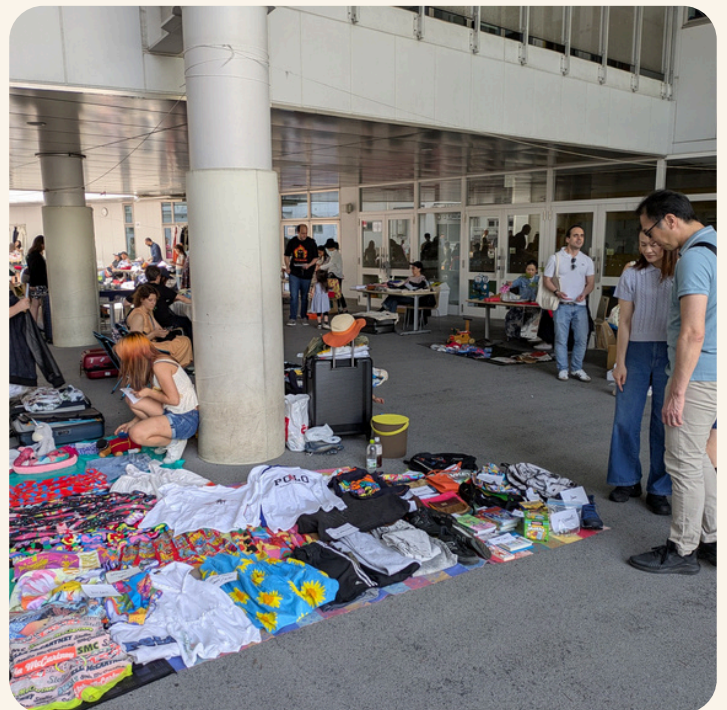


# Flea market on April 19

With **50 exhibitors**, radiant sunshine, and many buyers, the 2025 FLT garage sale was once again a resounding success!

We were delighted to welcome local residents among our sellers and buyers, making this Saturday a wonderful day of togetherness and sharing—two values dear to FLT!

The reservation of spaces raised over 40,000 JPY, which will be entirely donated to the school's solidarity fund. Once again, a BIG THANK YOU to everyone for your participation.





# Eco-team activities



On **Saturday, April 19**, we took 40 children to discover the world of bees 🐝  
Thanks to the Ginpachi association, which manages around ten hives on the rooftops of a building in the heart of Ginza, our young explorers from CP to CM2 were able to learn more about the life cycle of these incredible insects and their importance in our ecosystem.

A highlight of the visit: the children were able to hold a male bee in their hands (they don't sting!), though not without a bit of apprehension. Some of the luckiest even witnessed the birth of a new bee!  
The visit wouldn't have been complete without tasting several of their honeys, including one harvested just the day before.

Thank you, bees!

And a big thank you as well to our volunteer translators—two secondary school students from LFI Tokyo and a parent—thanks to whom all the children were able to fully enjoy the workshop.  
See you soon for more discoveries about ecology.



# School supplies



For the third consecutive year, the parents' association is offering a service for ordering French **school supplies through the company LDE**, with delivery directly to the school and distribution by FLT volunteers on the first day of school and the days following.

**The bookstore La Maison Petit Renard**, for its part, will handle the ordering of books/novels/textbooks and workbooks.

LDE is able to provide the exact French items requested by the school, as specified in the school supply lists. However, it is also possible to purchase equivalent supplies in Japan, which are generally accepted by the school—except for certain calculators, for which the French model is required.

To meet delivery deadlines, two separate online ordering systems are in place this year depending on the products:

- **Orders for school supplies only, via LDE, with the order deadline set for May 24.** This date allows for free shipping by sea and delivery in time for the start of the school year.
- Orders for **books/novels, textbooks, and workbooks will be placed in June** (once the lists are provided by the school) via **Maison Petit Renard**. Orders will be shipped by air, with free in-store pickup or paid home delivery available.

A used book exchange will also be offered by Maison Petit Renard, which will buy back your used books to resell them at standardized prices.



# Big raffle during the school festival

Once again this year, our school festival promises to be exceptional, and our **Grand Raffle**, organized by the FLT for everyone's enjoyment, is set to be especially generous: with the support of over **100 sponsors**, we have gathered more than **800 prizes!**

There are gifts for every taste: hotel stays, gourmet baskets, decorative items, music lessons, home appliances, wellness treatments, high-tech gadgets, and more.

Each ticket is a chance to win a fantastic prize while supporting school projects, as all proceeds from ticket sales will be used to fund educational initiatives, school equipment, and to contribute to the school's solidarity fund. A huge thank you to all our sponsors for their generosity and commitment. Thanks to them, this raffle is much more than just a game—it's a true act of local solidarity!

You can find the full list of prizes and sponsors in the dedicated section, and be ready to buy your tickets as soon as spring break ends!

Please note that, on the day of the festival, the FLT will also be hosting an **exhibition of handcrafted items** made by parents from LFI Tokyo. Come discover the talents of our school community's parent-artists and enjoy some shopping.





# Our sponsors

