



# Newsletter FLT

FEBRUARY 2026

## Representing you

The plum trees in bloom signal the winter holidays as well as the midpoint of the school year. During the period that has just ended, the members of the board began preparing upcoming events and represented you at the school's councils and committee meetings.

- Primary School Council – January 22
- Secondary School Council – January 22
- LFI Tokyo School Meeting – January 26

The meeting minutes are available on the FLT association's website.

All your questions or suggestions regarding the school are welcome and will be addressed at the upcoming council meetings. The online form is also available on the website.

## UPCOMING EVENTS

APRIL

18

Garage sale from 10h à 16h

MAY

23

School party

## CALL FOR SPONSORS FOR THE RAFFLE!



## About our actions

- "Aux devoirs les parents" course
- Lycée café bilinguisme du 12 février
- Other FLT actions

## CONTACT INFO

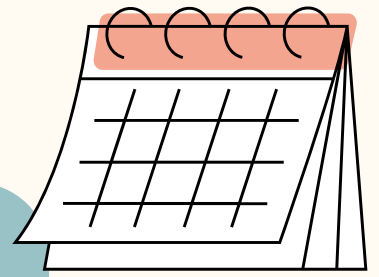


[association@familles-lycee-tokyo.com](mailto:association@familles-lycee-tokyo.com)



<https://www.familles-lycee-tokyo.com/fr/>

# Keeping you informed



## School calendar 2026-2027

During the various council meetings, the proposed school calendar for the 2026–2027 academic year was voted on. It still needs to be validated by the relevant AEFE authorities before becoming official, but unless changes are made:

- The start of the school year in 2026 is expected to take place on Tuesday, September 1.
- The autumn break (Toussaint) will run from October 17 to November 1.
- The Christmas holidays will run from December 19 to January 3.
- The February break will run from February 20 to March 7.
- The spring holidays will run from April 24 to May 9.
- The summer holidays will begin on July 3 (with the last day of classes on Friday, July 2).

## How to stay informed ?

- By reading our summaries of meeting minutes on our website <https://www.familles-lycee-tokyo.com/en/>



### Want updates about the association and school life?

- By following our [Instagram](#) or [Facebook](#) page
- By joining the parent chat groups on :
  - [WhatsApp](#) (secondary school)
  - [Line](#) (primary school)



f | l | t

familles  
du lycée  
de Tokyo  
リセ家族の会



## Training course for non-French-speaking parents: a highly encouraging first initiative

In front of the school gates, parents meet and chat — about the weather, of course, but also about their challenges. At the beginning of the school year, Ewa heard many Japanese mothers explaining how difficult it was for them to help their children with homework, especially in CP/CE1 (Grades 1 and 2), because of the language barrier.

So Ewa came up with an idea: to offer a short, free training course for non-French-speaking parents, drawing on her expertise as a teacher of French as a Foreign Language. It was such a good idea that FLT decided to support it by organizing the course entitled “Parents, Time for Homework.”

Over the course of five 1½-hour sessions held between January and February, parents learned how to pronounce French, became familiar with common homework instructions, and even completed assignments in French themselves. A real challenge — especially for those who had no prior knowledge of the language!

The participants placed their trust in Ewa, faithfully following the method she proposed. With guidance between sessions, they made rapid progress — enough to begin helping their children even before the end of the course.

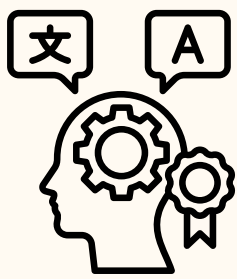
Regardless of their initial level, all 12 parents warmly praised the initiative, which boosted their confidence and even motivated them to continue learning the language of Molière.



*FLT would like to thank:*

- Ewa Laszecka for her generous initiative,
- Mme Cazères, who teaches FLScO in primary school, for her support,
- LFIT for hosting the training course.





# Lycée-Café on bilingualism



On **Thursday, February 12**, our **second Lycée-Café** of the year took place – an informal gathering centered around a topic that brings together many parents in our community: **bilingualism / multilingualism**.

For the occasion, we were joined by two guest specialists: **Stéphanie Moreels (speech therapist)** and **Alice Kibe-Crenn (psychologist)**. Through a clear and highly educational presentation, they laid the foundations for understanding what bilingualism means, how it functions, and how to foster a healthy balance between two languages. Various aspects of bilingualism were explored, including language proficiency, identity development, and communication between parents and children, among others.

Following the presentation, attending parents were able to ask questions, exchange ideas, and enjoy drinks and sweet treats prepared by FLT. That is the spirit of the Lycée-Café: a welcoming space to meet, connect, and support one another as parents facing shared challenges.



# FLT Initiatives for the School Community



## Road Safety

FLT has taken action on the issue of road safety around the school after receiving several messages from parents and members of the school community expressing concerns about traffic conditions near the campus.

An incident also occurred at the beginning of the school year, when a student ran into the street and came into contact with a car. Fortunately, the accident did not result in any serious injuries. Nevertheless, FLT wished to respond immediately by consulting the relevant authorities to prevent such an incident from happening again.

Following discussions with the Commissariat de police de Takenogawa and the Mairie de Kita, a "Caution: **Pedestrians**" sign was quickly installed, thanks to the support of the city authorities, before the pedestrian crossing located near the neighboring park. Road markings indicating "Slow Down" are also expected to be added soon.

横断者注意

We encourage you to take this opportunity to talk with your child about road safety rules and best practices on the way to and from school.

**Safety is everyone's responsibility!**



f | l | t

familles  
d'ulcée  
de tokyo  
リセ家族の会



# Garage Sale – Saturday, April 18

## How to Exhibit and Sell?

You simply need to register via the form that will be sent by FLT and make the payment to confirm your registration:

- 1,000 JPY for a space with a table
- 500 JPY for a space on the ground
- **Free for FLT members** (coupon provided at the time of payment)

The proceeds from the garage sale will go to the Lycée's solidarity fund.

**Free entry for visitors  
(no pre-registration required)**



## What Can I Sell?

Anything taking up space in your closets:

- Books
- Clothing
- Toys/Games
- Tableware
- Small furniture (for bulky items or furniture, we recommend bringing photos instead)

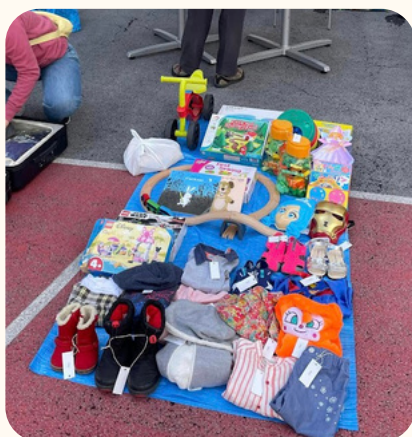
**Note:** The sale of drinks and food is not allowed. Coffee and light snacks will be available from Cezars Kitchen (the school's catering service).

### Date, Time, and Location :

Saturday, April 18, from 10:00 AM to 4:00 PM (exhibitors may arrive from 9:00 AM) in the courtyard of the elementary section of the Lycée's main building.

## And what to do with children's books and magazines you no longer need?

Offer them to your children's teachers — they are always in need of books to stock their classroom libraries!





# A Cutting-Edge Sport at LFIT



Did you know that CM2 students practice fencing in January? This year, the sports cycle could have been jeopardized due to the deterioration of the material used in the training masks. Informed of the situation and eager to maintain this unique activity, FLT decided to fund the purchase of new masks using proceeds from last year's raffle.

Other investments for both primary and secondary levels will also be funded by the raffle proceeds.

**A big thank you to everyone involved in the raffle: participants, organizers, and of course all the sponsors.**



*Initiation to Fencing at LFIT: well-equipped, the future champions are ready for both the parade and the thrust!*





# Lycée Festival Raffle!



## Call for Sponsors for the Raffle!

The LFI Tokyo Festival will take place this year on **Saturday, May 23, 2026**, with a backup date of May 30 in case of rain. On this occasion, FLT will once again organize a major raffle. The volunteer team has already begun seeking sponsors and prizes, which we hope will be plentiful again this year!

Do you work for a company that could provide prizes? Or perhaps your spouse's or friends' company? Please don't hesitate to contact us if so. As a token of our thanks, sponsors will receive visibility on the day of the event and in the promotional communications leading up to it.

[tombola@familles-lycee-tokyo.com](mailto:tombola@familles-lycee-tokyo.com)



*From the nervous anticipation of the raffle draw to the announcement of the winners, the raffle is always a highlight of the school fair.*





# FLT partners

Enjoy the special benefits offered to our members!

**Maman 101** Soutien scolaire en Français  
Aide aux devoirs  
maman101 | info@maman101.com | Coïlle Yavoi

La Petite École Solidaire Rapprocher les enfants binationaux de la langue française et de la culture francophone

**l'école des loisirs** Le meilleur de la littérature jeunesse pour vos enfants

**MAISON PETIT RENARD** Librairie Française à Takingogawa

**Bayard Jeunesse** | **milan** Magazines, livres et BD pour les 0-18 ans

**kokoro lingua** MINISTÈRE DE L'ÉDUCATION NATIONALE, DE LA JEUNESSE ET DES SPORTS INSTITUT FRANÇAIS GESS EDUCATION AWARDS WINNER 2020

**KING'S ROAD SCHOOL OF ENGLISH** Call Us Mon - Fri 12:00 - 19:00 03-3589-8666

**ESPACE PROF** École de Japonais spécialement conçus pour les francophones depuis 1998

**DREAM LAB** Robotics · Programming · 3D Modeling After-School

**ATELIER FABER ET MAZLISH TOKYO** Ateliers d'échange et de soutien à la parentalité méthode Faber et Mazlish

**Sophrologie, PNL et Coach Bien-être à Tokyo** Accompagnement personnalisé pour mieux gérer le stress, l'anxiété et les périodes de difficulté émotionnelle. Préparation mentale aux examens, entretiens et événements sportifs. Enfants et adultes.

**HELLO CHANGE** Ateliers d'aïkido verbal pour apprendre - à réguler le stress et l'émotivité - s'exercer à désamorcer l'agressivité et les conflits

**NOMADE** Stages avec hébergement, Mini stages et tournois en ligue junior (U-15 et U-18) Entraînement football à l'année

**MIX BASKETBALL CLUB** Club International de Basketball Entraînements - Stages - Compétitions

**徳源** Cours de Karaté en trilingue Eduquer le corps dans un esprit vertueux

**TOKYO GUITARE** Cours de guitare à domicile

**Les Oiseaux** Eveil musical, classes de piano et de chant enfant et adultes

**Antoine Rollet music school** Cours de piano/guitare/trompette en français japonais ou anglais tous niveaux acceptés

**Atelier de musique « petit à petit »** Atelier choral, cours individuels tous niveaux de chant, solfège et piano Studio à Itabashi ou à domicile Renseignements et réservation : chiebisou@gmail.com

**L'Atelier de Miki** École de Musique Cours de piano, flûte, violon, violoncelle et chant

**Cours d'art floral Ikebana Atelier Florales** info@atelier-florales.com

**YUKA MATSUI** Atelier de Calligraphie Shodô

**Cours de dessin** Révélez l'artiste qui est en vous ! www.estellotokyo.com

**ATELIER PASSAGE** Cours d'Ikebana Sogetsu trilingue à Takingogawa - Rishu IWATA -

**Atelier café gare de Lyon** Cours de théâtre et d'improvisation (enfants, ados et adultes)

**ACTING COACH JAPAN** Ateliers Jeu de l'Acteur de Cinéma pour Enfants et Adolescents en français et en anglais

**Coiffeur Hairstylist Francophone** Hajimé @ Undercurrent Salon - Daikanyama / Shibuya hajimesmagichands@gmail.com

Detail on the offers :

<https://www.familles-lycee-tokyo.com/fr/partenariat-flt/>