



Newsletter June 2026

Committees and councils p. 4

Your parent representatives took part in the various councils and committees that were held during this past school term:

- Secondary School Council – June 3
- Primary School Council – June 2
- School Council – June 4
- Board of Directors Meeting– June 12

Feel free to read the meeting minutes on our [website!](#)

Feedbacks of our activities

- School Fair & Raffle – p. 2
- Lost and Found – p. 3
- Inclusive School Working Group – p. 5
- Eco Team – p. 6
- Helping with Homework: A Guide for Parents – p. 7
- Japanese School Immersion Program – p. 8



Back-to-School Preparation

- School Supplies – p. 9
- Mentoring Program to Help Guide New Families/Newcomers – p. 9
- Calendar: Back-to-School Events – p. 11

FLTs Evolve and Innovate- p10

Support or Join the Association

- **Become a member:**

Membership is a great way to show your support. It gives you access to additional information and special benefits for our activities: [link](#)

- **Get involved in the association's projects and initiatives:**

[Contact us](#) to learn more and discuss how you can contribute. We welcome people from all backgrounds and with all kinds of skills—our diversity is our strength!





Highlights from the May 23 School Fair



Blessed with pleasant weather, the 2026 edition of the School Fair welcomed nearly 2,000 visitors, including students and their families, teachers, alumni, and even prospective students.

The day featured a rich and varied program, with performances, concerts, entertainment, games for children, workshops, and even a kimono fashion show. Congratulations and thanks to everyone who helped make this event a success, jointly organized by the school and the FLTs.

The Raffle, a flagship event organized by the Families of the Lycée, FLT, once again generated great enthusiasm. Thanks to the generosity of our 118 sponsors, **710 prizes** were up for grabs. A huge thank-you to them, as well as to the dedicated team of volunteers who have been working on the event since January.

The raffle in numbers:

- **17,782 raffle tickets sold**, generating ¥1,779,200 in net proceeds
- **72.6% of participants won at least one prize**

The funds raised through the raffle will help support numerous initiatives benefiting students at the Lycée Français International de Tokyo and contribute to improving their daily school experience.

Thank you all for your participation and support!

Above all, the School Fair was about the laughter of a thousand children, meaningful conversations, and the joy of reconnecting as a community.



Forgotten Items 2025-26: We Can Do Better!

For several years, the school has set itself the goal of achieving “Zero Lost Clothing.” Yet a quick look at the lost-and-found bins in the secondary school and the racks in the primary school shows that this goal has not yet been reached.

Why do these personal belongings fail to find their way back home?

Throughout the year, we have supported the school, shared messages with families, and suggested ideas to help address the problem.



During the school fair, several parents took turns helping to “shrink” the mountain of 169 kg of items that had been left behind since September 2025.

We counted **458 visitors** at the stand: some were curious, some were surprised, while others were less surprised, many were delighted:

- 70 people searched for and found a lost item belonging to them,
- and a few were disappointed: 11 people searched but were unable to find their belongings.



Why do winter coats, complete swimming bags, pairs of shoes, and even school notebooks and textbooks remain unclaimed?



Labeling clothing, bags, and water bottles is, of course, essential, but unfortunately it is not enough on its own. We will continue our efforts next year to move closer to achieving this goal.

Items that have remained unclaimed since the school fair will be displayed before the summer holidays. Please check now to make sure nothing is missing from your home.

To give these items a second life, they will then be added to the others and donated to a charitable organization, which will distribute them to families in need through several centers across Tokyo.

Committees and councils



School Council, Secondary School Council, School Governing Board and Board of Directors

As the school year comes to a close, here are some of the key points discussed during the various council meetings. For more details, please consult the full meeting minutes on our website under the Representation section.

School Council

- 18 classes took part in school trips, and 7 kindergarten classes (Grande Section) participated in the “One Night at School” project.
- A wide range of educational projects were carried out throughout the year, including Ambassadors in Action (Ambassadeurs en Herbe), the organization of the Asia Chess Cup, Reading Night, the project “In Kindergarten, I Play and I Learn”, philosophy cafés for CM2, the 10 Days Without Screens challenge, and participation by three classes in the Kyotographie photography festival, among many others.
- School trips for five CMI–CM2 classes have already been scheduled for October and November 2026.
- Current elementary school enrollment stands at 811 students, with 785 students expected for the 2026–2027 school year.
- One kindergarten class will close at the start of the 2026–2027 school year in response to declining enrollment.

Secondary School Council

Projected enrollment for the secondary school next year is estimated at 844 students across 32 classes.

A Year 8 class (5e) will open, while one Year 9 class (4e), one Year 12 class (Première), and one Year 13 class (Terminale) will close.

Several school trips and exchanges are planned for next year:

- October 2026: Classics students’ trip (Première and Terminale) – 13 students participating in an archaeological research project on Honshu Island.
- November 2026: Gotemba/Hakone trip for Year 9 (4e) students – two classes accompanied by Ms. Salzman.
- November 2026: Audiovisual exchange with Hong Kong Cinema for students in Seconde, Première, and Terminale.
- March 2027: Prozap Basketball Tournament in Shanghai (March 16–20), open to students from Year 8 (5e) and above.
- Prozap Model United Nations (MUN) in Phnom Penh – 12 to 14 students.
- Prozap Chess Tournament in Hanoi.

School Rules Update

The school regulations regarding tobacco and related products (Section 3.1) will be updated. The current wording prohibiting tobacco use, “including in its newer forms,” will be clarified to explicitly ban:

- Electronic cigarettes (vapes)
- Snus
- Other nicotine products
- Alcohol consumption by minors, in accordance with Japanese law

Inclusive School Working Group



Our Inclusive School Working Group remained active throughout the year thanks to the WhatsApp group connecting parents. This group provides a space to share information and experiences on a variety of topics, including diagnosis of learning or developmental difficulties, the implementation of support plans (PAP and PPS), therapeutic follow-up, and support from an AESH (student support assistant).

Your parent representatives also continued to liaise with the school on these issues. For example, we requested feedback on the DAIS program, which was introduced this year, and gathered information about the new EBEP coordinator, who will take up his position in September. We have already been in contact with him and will be organizing a meeting in the near future.

If you would like to join the group or have any questions, please do not hesitate to contact us at our dedicated email address:

ecole-inclusive@familles-lycee-tokyo.com



Understanding DAIS

The School Inclusion Support Program (DAIS – Dispositif d’Aide à l’Inclusion Scolaire) was introduced this year to support certain students with special educational needs, from Grade 1 (CP) through Year 9 (3e).

Students enrolled in the program generally have an official recommendation from the MDPH calling for this type of support, as well as assistance from an AESH.

The DAIS program currently serves between 10 and 15 students. Each student’s schedule is tailored to their individual needs and developed in consultation with the educational team and the family.

Students attend their regular classes in the morning, with or without AESH support. During selected afternoon periods (up to four times per week), they join the DAIS classroom, which is supervised by the inclusion coordinator and a shared AESH. There, they can work on specific learning objectives and progress at their own pace in a supportive and adapted environment. Time spent in DAIS is adjusted throughout the year according to each student’s progress.

DAIS is part of a three-year pilot program initiated by the Primary School Principal and supported by the FLTs.

The results of this first year have been very positive, benefiting not only the students and families involved, but also teachers and classmates.

AESH (Accompagnant des Élèves en Situation de Handicap) Student Support Assistant for pupils with disabilities or special educational needs.

DAIS (Dispositif d’Aide à l’Inclusion Scolaire) School Inclusion Support Program.

MDPH (Maison Départementale des Personnes Handicapées) French Departmental Office for Persons with Disabilities.

PAP (Plan d’Accompagnement Personnalisé) Personalized Support Plan for students with learning difficulties or specific educational needs.

PPS (Projet Personnalisé de Scolarisation) Individualized Education Plan designed for students with recognized disabilities.





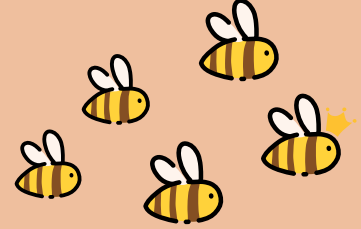
ECO TEAM FLT

Small Actions, Big Impact!

Learn about everyday eco-friendly habits with the Eco-Team.

Once again this year, the FLT Eco-Team, a group of LFI Tokyo parents committed to sustainable development, organized a series of workshops for children from Grade 1 to Grade 5 (CP to CM2). Through fun and hands-on activities, the workshops aimed to raise awareness about protecting the planet.

At each session, **around thirty children** came together with a shared goal: to adopt environmentally responsible habits in their everyday lives.



Three highlights marked the year:

December – Eco-Friendly Christmas Decorations

Children created festive decorations using recycled materials and natural elements.

May – The Beehives of Ginza's Rooftops

A fascinating opportunity to discover the life of bees and their essential role in our ecosystem, in partnership with the Ginpachi Association, followed by a honey-tasting session.

June – Change Your Plate, Change the Planet

Learning how eating local and seasonal food can help the environment, reducing food waste, and finishing with a surprise cooking activity!

Throughout the year, the Eco-Team also engaged with families on topics such as **reducing plastic use, preventing waste, protecting biodiversity, promoting sustainable food choices, and recycling.**

A big thank you to all the children and parents who took part. We look forward to seeing you next year for more eco-friendly adventures! 🌱🌍

Interested in getting involved in environmental initiatives?

Feel free to contact us to learn more about our activities and current volunteer opportunities.

ecoteam@familles-lycee-tokyo.com 🌱





Discover and make the most of games that can be used as homework.



Discovering and embracing games as a way to do homework

Following the **Lycée Café held on April 23**, which focused on homework at home, several ideas emerged. Among them was a workshop designed as a way to guide parents towards greater independence and, above all, to help them gain confidence when facing the often-challenging homework routine. It was an ambitious initiative and, in the end, a valuable experiment that taught us a lot, as parents were invited to attend with their child(ren).

Suzu arrived with her mother, not really knowing why she was coming to school on a Saturday morning. As soon as she heard the word “homework,” she immediately exclaimed: “I don’t like homework!”

At just 7 years old, this first-grade student spoke French with ease, even though both of her parents are non-French speakers. Suzu may not like homework, but she does enjoy playing! Luckily, that was exactly what brought everyone together on Saturday, June 13. “Shall we play the ‘7 Families of Sounds’ game?”

The game began. Her mother nervously held the cards, trying to remember the words: “In the family... I would like the...” Suzu quickly got into the game. She repeated, made mistakes, tried again, and collected one family after another.

She then moved on to another game inspired by Dobble, designed by Ewa. Meanwhile, her mother discovered how to create a card game based on the Pilotis textbook and how to play it with her daughter – without even needing to understand French herself. The children also played together, in French, while parents watched with curiosity and interest.



The morning goes by quickly, filled with conversations in several languages, discoveries, interactions, and many questions: “How can we keep practicing French during the summer holidays?” “How can we prepare for starting CP in September?”

The Resources Hub is one possible answer. It is an online resource centre created by the FLT working group “Aux devoirs les parents” (“Parents, let’s tackle homework”). It guides families through a selection of media, games, and activities chosen for their educational value and adapted to children’s ages.

Summer will most likely bring new ideas and initiatives because yes, “Aux devoirs les parents” will be back in September.

In the meantime, share your suggestions to help bring the Resources Hub to life:

<https://www.familles-lycee-tokyo.com/en/aux-devoirs-les-parents-resources-hub/>

JAPANESE SCHOOL IMMERSION PROGRAMME – MEISHO ELEMENTARY SCHOOL, SUMMER 2026

On the occasion of the 32nd edition of the traditional school immersion programme at Meisho Elementary School, 14 students selected by lottery from among applicants from CP to Grade 6 will take part in the programme from Tuesday, July 7 to Friday, July 10.

In Japanese schools, education is not limited to academic learning. Life in the school community, through activities such as serving meals and cleaning the premises, is also considered essential for developing the following skills:

- The ability to cooperate with others;
- A sense of responsibility as a member of society;
- The ability to take ownership of, and improve, one's own environment and surroundings.

In many Japanese primary schools, school lunches are delivered to each classroom in large communal containers. Students assigned to lunch duty, wearing an apron and a bandana, are responsible for serving meals while taking into account their classmates' allergies and appetites. Students then eat at their desks in the classroom and take part in cleaning up after lunch.

In addition, older students will also have the opportunity to experience an introduction to swimming while fully dressed as part of their swimming lessons.

Every year, the Meisho School team welcomes this exchange with great enthusiasm and care. To honour this trust, parents of participating students from the Lycée Français also contribute to the organisation as volunteers. We would like to express our sincere gratitude to them here.

We hope that this experience will become a precious memory for the participating students and their families, and that it will be filled with discoveries and learning opportunities.

In accordance with Meisho School's requirements, participation is limited to students who are able to understand and use Japanese at a level equivalent to that of a native speaker, as well as families whose parents can communicate comfortably in Japanese.



Back-to-School Preparation



School Supplies / Books / Textbooks

For the fourth year in a row, the parents' association is offering a **school supplies ordering service through the company LDE**, with direct delivery to the school and distribution organised by FLT volunteers on the first day of school and the following days.

<https://parents.lde.fr/e/lfi-tokyo>

The bookstore **La Maison Petit Renard**, for its part, will take care of orders for books, novels, textbooks, and workbooks. <https://mpr-lfit.square.site>

In order to meet delivery deadlines, two separate online ordering systems have been set up this year depending on the type of products:

- School supplies only: order through **LDE** (Deadline for orders shipped by sea: June 1. Orders can still be placed until the end of July with a €25 fee per order (air freight delivery)).
- Books / novels / textbooks / workbooks: order through **La Maison Petit Renard** until June 30. Orders will be shipped by air, with either free in-store pickup or paid home delivery available.
- A book exchange scheme is also offered by La Maison Petit Renard, which will buy back your second-hand books in store and resell them at affordable prices. Buy-back deadline: June 23, No deadline for resale.

Mentoring program

Once again this year, the FLT mentoring program, which allows families already part of the school community to welcome and support new families (whether they are arriving from the Japanese school system, France, or another country), has been a great success! 41 pairs were created in 2025.

We would love to hear your feedback about your experience as a mentor or as a new family, and please let us know if you would like to continue this adventure next school year. Feel free to spread the word as well: the more potential buddies we have, the more new families we will be able to support!

To become a buddy or to be matched with one, register here: <https://forms.gle/SxSmizf3tvdLPrAP7>



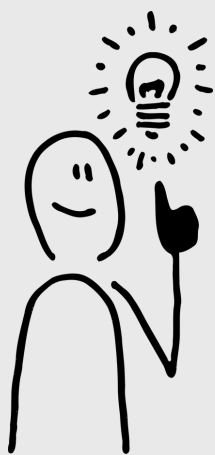
FLT is reinventing itself this September: Imagine, suggest, get involved!



To encourage community initiatives, FLT will now be organised around two complementary areas:

Representation Team

- Liaison with the school
- Administrative and educational matters
- Representing parents in school bodies (Primary and Secondary)
- French proficiency required



Events Team

- Projects for students and families
- Workshops, events, and gatherings
- Parent-led initiatives
- Multilingual involvement



The association is more open than ever: whether you would like to get involved in one of these teams, join the board, launch a project, or contribute to an initiative already underway, your participation is warmly welcome.

Would you like to get involved? Do you have an idea? It could become FLT's next project. Let's talk about it now: contact us anytime through our [contact form](#) so that we can build together, by and for the LFI Tokyo community – and beyond.



Mark your calendars: Back-to-school events!



Tuesday, September 1st – First day of school

As is tradition, part of the FLT parent representatives team will be at the entrance of the main building to welcome you, answer your questions, and provide information.

Don't hesitate to come and see us at the FLT stand at the main building entrance!

We will also be there for the distribution of school supplies. If you have an order waiting for you, please come and collect it in the meeting room at the school entrance. Don't forget to bring a large bag or a suitcase, as some packages are bulky and heavy.

Saturday, September 12 (or September 26 in case of rain) – Family Picnic at Asukayama Park (near Oji Station)

A friendly gathering for families to meet new people or reconnect, have fun, and enjoy time together – for both parents and children! A great way to start the school year.

During September – International Lycée Café

The Lycée Café is an opportunity to meet other parents and discuss the school (preschool, primary, middle school, and high school), how it works, the curriculum, language pathways, extracurricular activities, and the work of our association.

FLT parent representatives who speak French, English, and Japanese will be there to help facilitate conversations.

Wednesday, September 23 – FLT General Assembly

This will be an opportunity to present the moral and financial report for the 2025–2026 school year, the outlook for the year ahead, and the candidates for the 2026–2027 FLT board.

The presentation of our activities and reports will be followed by an informal coffee and refreshments session. Feel free to come meet us, meet other parents, and ask any questions about the association or the school.

During October – Inclusive School Lycée Café

The Inclusive School group will organise its annual Lycée Café for families concerned (parents of children with specific educational needs*) to welcome new families, reconnect after the start of the school year, and answer questions.

A dedicated email will be sent to the relevant families once the date has been confirmed.

EBEP: students with special educational needs

**Wishing everyone a wonderful
summer, and we look forward to
seeing you again in September!**



Enjoy member discounts from FLT partners



La Petite École Solidaire

Rapprocher les enfants binationaux de la langue française et de la culture francophone



Bayard Jeunesse

Magazines, livres et BD pour les 0-18 ans

Les Oiseaux
Eveil musical, classes de piano et de chant enfant et adultes



MAISON PETIT RENARD
BEAUX LIVRES BD ILLUSTRATIONS

Librairie Française à Takingawa



Maman 101 Soutien scolaire en Français Aide aux devoirs



ACTING COACH JAPAN Tokyo
Ateliers Jeu de l'Acteur de Cinéma pour Enfants et Adolescents en français et en anglais

ATELIER FABER ET MAZLISH TOKYO
Ateliers d'échange et de soutien à la parentalité méthode Faber et Mazlish

NOMADE FOOTBALL CLUB
Stages avec hébergement, Mini stages et tournois en ligue Junior (U-15 et U-18) Entraînement football à l'année

Cours d'art floral **IKEBANA**
Atelier Floralties
info@atelier-floralties.com



アントワープ・ロレ音楽学校
Antoine Rollet Cours de piano/guitare/ trompette en français japonais ou anglais tous niveaux acceptés

DREAM LAB
Robotics · Programming · 3D Modeling After-School

KING'S ROAD SCHOOL OF ENGLISH
Call Us Mon - Fri 12:00 - 19:00 03-3589-8666

TOKYO GUITARE
Cours de guitare a domicile

Atelier de musique « petit à petit »
Atelier choral, cours individuels tous niveaux de chant, solfège et piano Studio à Itabashi ou à domicile Renseignements et réservation : chiebisou@gmail.com

Atelier café gare de Lyon
Cours de théâtre et d'improvisation (enfants, ados et adultes)



kokoro lingua
MINISTÈRE DE L'ÉDUCATION NATIONALE, DE LA JEUNESSE ET DES SPORTS
INSTITUT FRANÇAIS
GESS EDUCATION AWARDS WINNER 2020

l'école des loisirs
Le meilleur de la littérature jeunesse pour vos enfants

Cours de dessin
Révélez l'artiste qui est en vous !
www.estellotokyo.com
Estello

MIX BASKETBALL CLUB
Club International de Basketball Entraînements - Stages - Compétitions

YUKA MATSUI Atelier Shodô de Calligraphie

Lemon Boost
Ateliers d'aïkido verbal pour apprendre à réguler le stress et l'émotivité, à s'exercer à désamorcer l'agressivité et les conflits

ATELIER PASSAGE
Cours d'Ikebana Sogetsu
Rishu IWATA

Sophrologie, PNL et Coach Bien-être à Tokyo
Accompagnement personnalisé pour mieux gérer le stress, l'anxiété et les périodes de difficulté émotionnelle. Préparation mentale aux examens, entretiens et événements sportifs. Enfants et adultes.

Atelier de Cuisine Japonaise
rue Chatons

La petite française Importation de Fromages, Saucissons, etc.

Cours de Karaté en trilingue
Eduquer le corps dans un esprit vertueux

Coiffeur Hairstylist Francophone
Hajimé @ Undercurrent Salon - Daikanyama / Shibuya
hajimesmagichands@gmail.com

町屋びと Club de cérémonie du thé Wabicha わび茶 - 茶道
MACHIYA-BITO

L'Atelier de Miki
École de Musique
Cours de piano, flûte, violon, violoncelle et chant
オトリエドミキ

ESPACE PROF
École de Japonais spécialement conçus pour les francophones depuis 1998